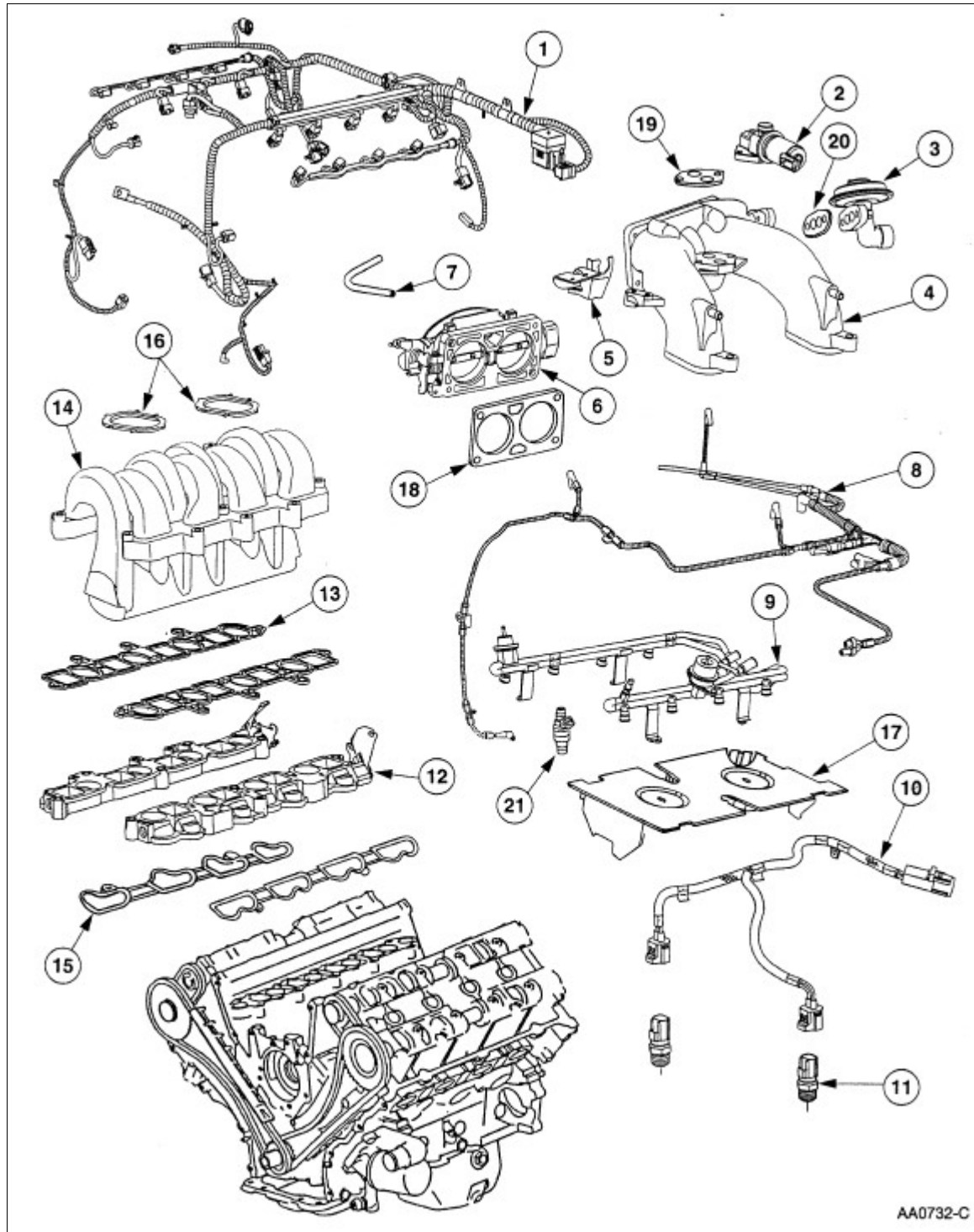


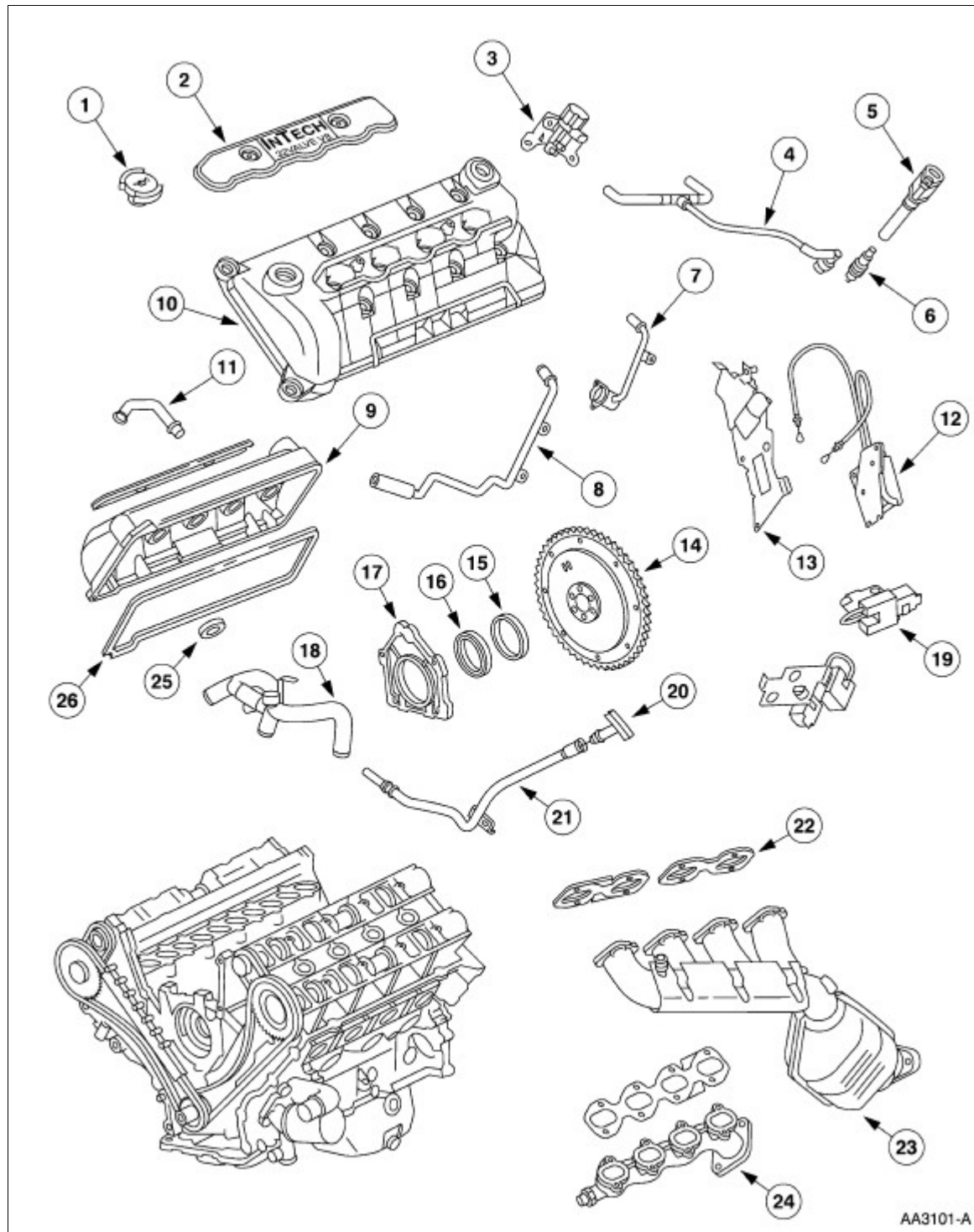
SECTION 303-01: Engine
DESCRIPTION AND OPERATION

1998 Mark VIII Workshop Manual

Engine Component View

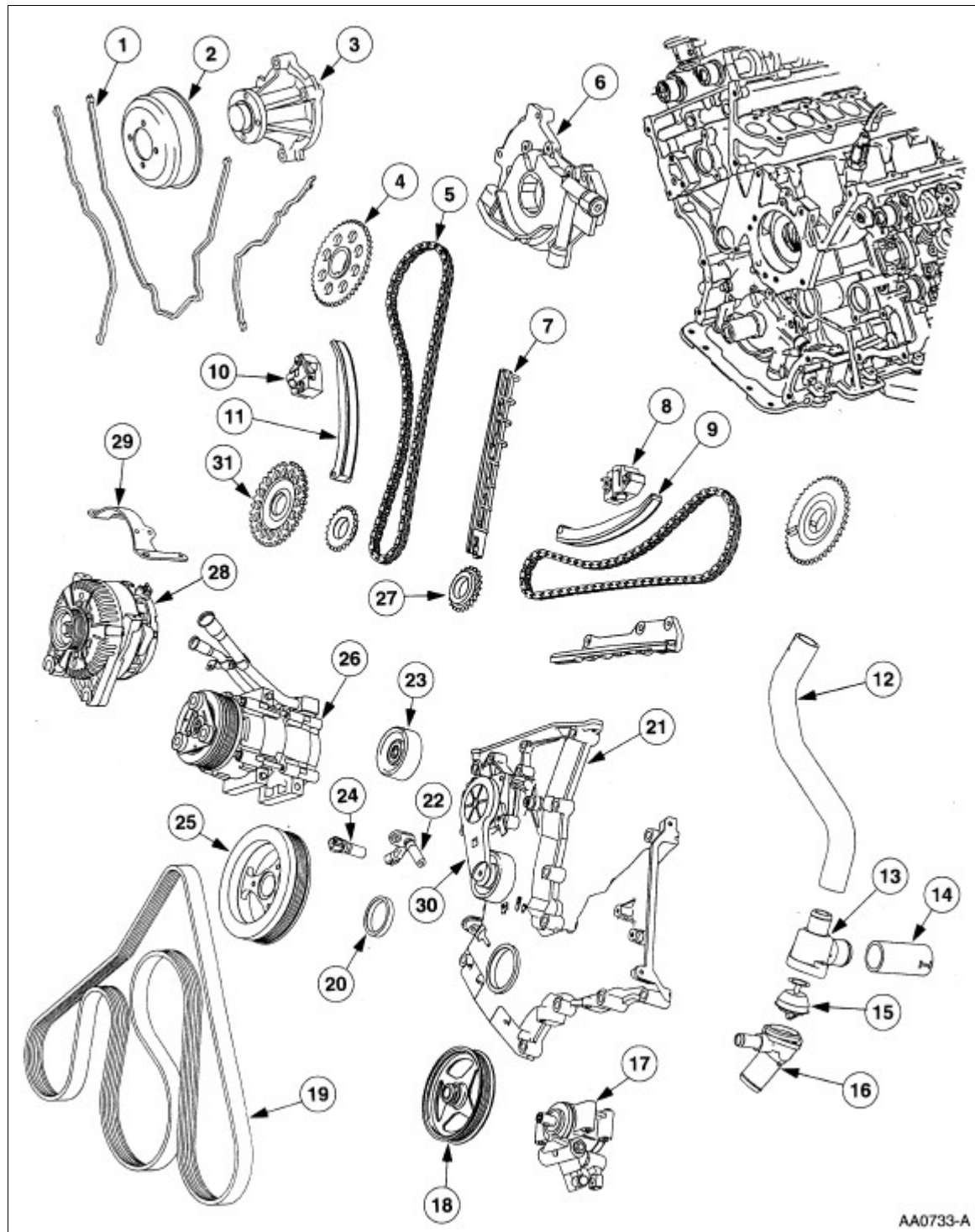
Item	Part Number	Description
1	12B637	Wiring Harness

2	9F715	Idle Air Control Valve
3	9D475	EGR Valve
4	9A448	Upper Intake Manifold
5	9723	Accelerator Cable Bracket
6	9E926	Throttle Body
7	9G297	Evaporative Emission Hose
8	9E498	Main Emission Vacuum Control Connector
9	9F792	Fuel Injection Supply Manifold
10	12B559	Wire Harness
11	12A699	Knock Sensor
12	9U531	IMRC Housing
13	9H486	Lower Intake Manifold to IMRC Gasket
14	9J447	Lower Intake Manifold
15	9461	Intake Manifold Gasket
16	9L437	Intake Manifold Water Connection Gasket
17	6N041	Noise Shield
18	9E936	Throttle Body Gasket
19	9F670	Idle Air Control Gasket
20	9D476	EGR Valve Gasket
21	9F593	Fuel Injector



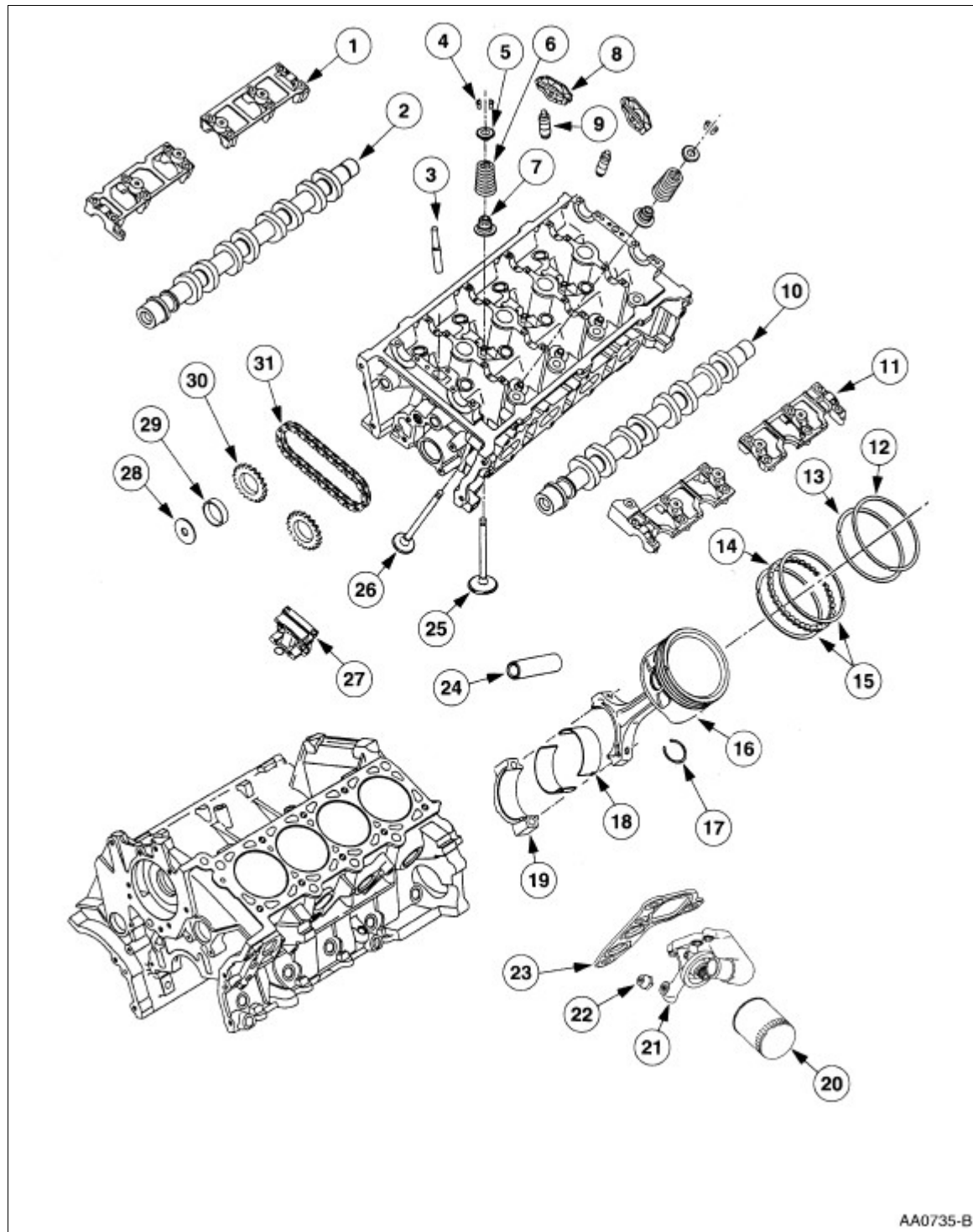
Item	Part Number	Description
1	6766	Oil Filler Cap
2	6P067	Ignition Coil Cover
3	9S429	EGR Vacuum Regulator Control and Bracket Assembly
4	6853	Crankcase Ventilation Hose

5	12A366	Ignition Coil Assembly
6	12405	Spark Plug
7	18472	Heater Water Hose
8	18472	Heater Water Hose
9	6582	Valve Cover
10	6582	Valve Cover
11	6758	Crankcase Ventilation Tube
12	9J559	IMRC Actuator
13	9J434	Delta PFE and Bracket Assembly
14	6375	Flywheel
15	6310	Crankshaft Oil Slinger
16	6701	Crankshaft Rear Oil Seal
17	6K301	Crankshaft Rear Oil Seal and Retainer
18	8548	Water Bypass Tube
19	18801	Radio Ignition Interference Capacitor
20	6750	Oil Level Dipstick
21	6754	Oil Level Indicator Tube
22	9448	Exhaust Manifold Gasket
23	5G232	Manifold Assembly
24	9430	Exhaust Manifold
25	6C527	Seal-Valve Cover (8 Req'd)
26	6584, 6A559	Valve Cover Gasket (LH), (RH)



Item	Part Number	Description
1	6020	Engine Front Cover Gasket
2	8509	Water Pump Pulley
3	8501	Water Pump
4	6256	Camshaft Sprocket
5	6268	Timing Chain/Belt

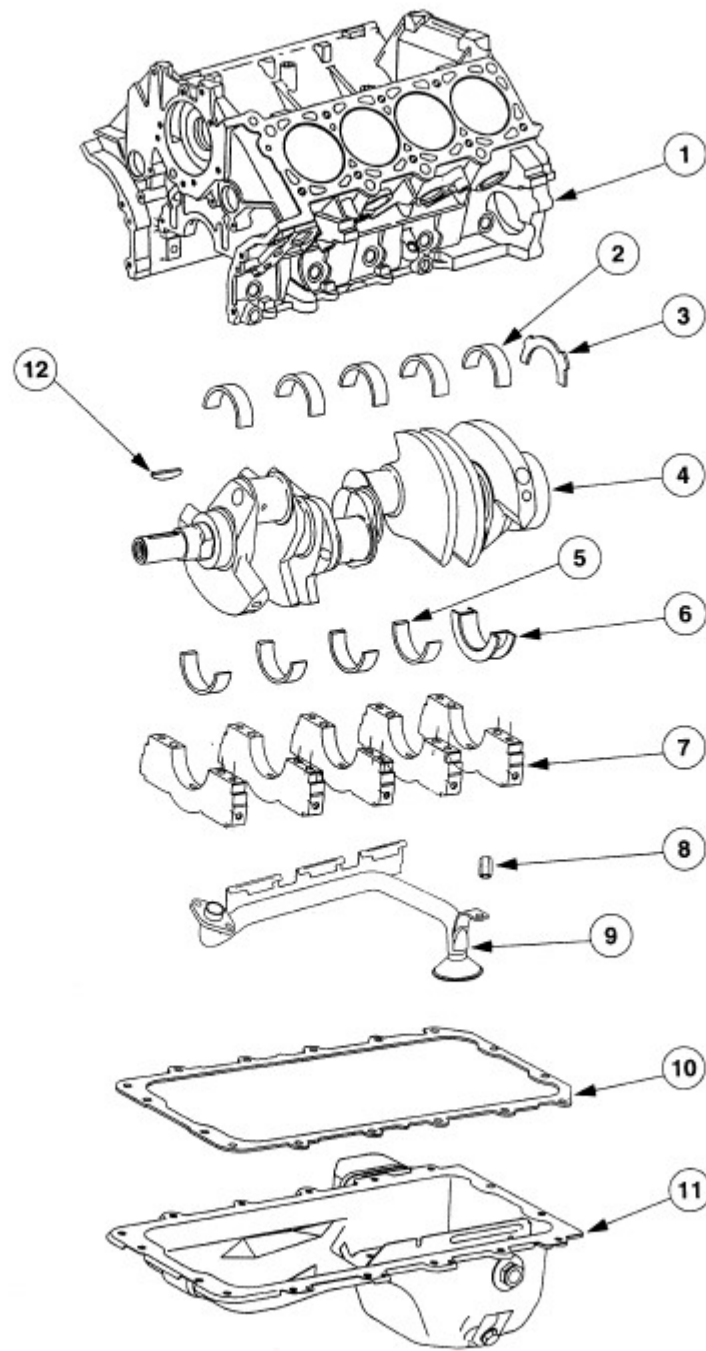
6	6600	Oil Pump
7	6K297	Timing Chain Guide
8	6M269	Tensioner, LH
9	, LH 6L253	Timing Chain Tensioner Arm
10	6L266	Timing Chain Tensioner—, RH
11	, RH 6L253	Timing Chain Tensioner Arm
12	8A593	Water Bypass Tube to Thermostat Housing Hose
13	8592	Water Hose Connection
14	8A595	Upper Thermostat Housing to Oil Filter Adapter Hose
15	8575	Water Thermostat
16	18599	Hot Water Heater Elbow Connection
17	3A674	Power Steering Pump
18	3A733	Power Steering Pump Pulley
19	8620	Drive Belt
20	6700	Crankshaft Front Seal
21	6019	Engine Front Cover
22	6C315	Crankshaft Position Sensor
23	8678	Belt Idler Pulley
24	6B288	Camshaft Position Sensor
25	6316	Crankshaft Vibration Damper
26	19703	A/C Compressor
27	6306	Crankshaft Sprocket
28	10300	Generator
29	10153	Generator Mounting Bracket
30	6B209	Drive Belt Tensioner
31	—	Ignition Pulse Wheel



AA0735-B

Item	Part Number	Description
1	6B277	Cap Assembly (Intake)
2	6250	Camshaft
3	6F087	Cylinder Head Oil Reservoir Restrictor
4	6518	Valve Spring Retainer Key
5	6514	Valve Spring Retainer

6	6513	Valve Spring
7	6571	Valve Stem Seal
8	6529	Roller Follower
9	6C501	Hydraulic Lash Adjuster
10	6250	Camshaft
11	6B278	Cap Assembly (Exhaust)
12	6150	Piston Ring—Upper Compression
13	6152	Piston Ring—Lower Compression
14	6161	Piston Ring—Oil Spacer
15	6159	Piston Ring—Oil Control Segment
16	6100	Piston—Connecting Rod Assembly
17	6140	Piston Pin Retainer
18	6211	Connecting Rod Bearing
19	6200	Connecting Rod
20	6714	Oil Bypass Filter
21	6881	Oil Filter Adapter
22	9278	Oil Pressure Sensor
23	6840	Oil Filter Adapter Gasket
24	6135	Piston Pin
25	6507	Intake Valve
26	6505	Exhaust Valve
27	6C271	Tensioner—LH Secondary
28	N806164	Washer
29	6265	Camshaft Sprocket Spacer
30	6256	Camshaft Sprocket
31	6268	Timing Chain



AA0731-A

Item	Part Number	Description
1	6010	Cylinder Block
2	6333	Crankshaft Main Bearing
3	6334	Crankshaft Thrust Washer
4	6303	Crankshaft
5	6333	Crankshaft Main Bearing
6	6337	Crankshaft Thrust Main Bearing

7	6325	Main Bearing Cap
8	N806180	Spacer
9	6622	Oil Pump Screen Cover and Tube
10	6710	Oil Pan Gasket
11	6675	Oil Pan
12	N806201	Crankshaft Key
